



ESD Long Life PU Systems

ESD Floor protection by Dr. Schutz

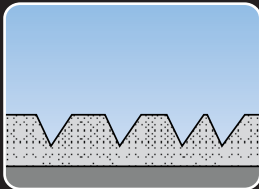


BEFORE



BEFORE

- Deep scratch marks are visible
- Marking tape residuals are difficult to remove
- The surface looks dull and discolored
- Even regular daily cleaning does not remove the dirt
- The surface has lost its ESD properties



Without ESD Long Life PU Sealer wear layer: Heavy use and wear, together with dirt particles can cause permanent damage to the conductive or ESD floor.

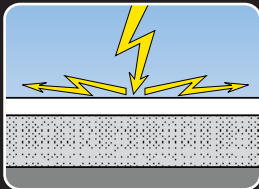


AFTER



AFTER

- Scratches are no longer visible
- The surface has regained its shine and color
- The floor is easy to maintain
- The ESD properties of the floor are in accordance with DIN EN 61340-5-1



ESD Long Life PU Sealer protects the surface while preserving its conductivity. ESD Long Life PU Sealer makes the floor particularly easy to clean and care for.



DESCRIPTION

We at Dr. Schutz understand the importance of your ESD floor. The flooring must fulfill the requirements of DIN EN 61340-5-1 norm, it has to be easy to maintain, capable of handling all types of traffic as well as esthetically pleasing for a long period of time.

ESD Long Life PU Sealer and ESD Long Life PU Sealer Color provide exactly that! If you want to renew your floor but keep its color and at the same time repair the conductivity, you should simply choose our ESD Long Life PU Sealer.

If on the other hand a new color is needed, or if you want to repair the old surface restoring it to its original look we advise the use of ESD Long Life PU Sealer Color (for available colors please check with your local dealer).

Prep work

First the cracks, problematic dilatations and missing molding lines have to be repaired. Then, to ensure a perfect application and finish, we recommend a Dr. Schutz certified installer.

Deep cleaning

Once the surface has been repaired, deep cleaning with Dr. Schutz Clean and Strip is required. Especially stubborn spots can be removed using Elatex Universal Stain Remover. Remove all the dirt, old waxes and fat as well as oil spots from the surface. After deep cleaning, thoroughly rinse the floor with clear water. Wait for the surface to be dry.

Application

The ESD Long Life PU Sealer has to be applied in 2 coats. The ESD Long Life PU Sealer Color will be applied in 3 coats, 2 color and one clear coat for better wear and tear resistance.

The content of the first phase bucket must be well stirred, the product must be homogeneous. Make sure there are no clumps in the mixture. Then add the cross linker to the content and mix it again. For the sealing process use only the Dr. Schutz Aquatop Roller, 10 cm-25 cm or 50 cm, according to the surface areas. Apply the first layer from the first phase bucket evenly to the floor. The second layer must be applied from the second phase bucket on the same day after the first coat is dry. If you work with ESD Long Life PU Sealer Color, the third and final coat has to be applied within 2 hours after the second color coat is dry.

The surface can only be used only after 48 hours after the second layer (or third in case of ESD Long Life PU Sealer Color), has been applied and can be cleaned with Dr. Schutz ESD Cleaner only after 7 days. In the first 7 days the surface can be cleaned with a dry mop.

REFERENCES

- Samsung Electronics Magyar Zrt. – Jászfényszaru (Hungary)
- Delphi Hungary Kft. – Szombathely (Hungary)
- EMC2 – Cork (Ireland)



ESD LONG LIFE PU AND PU COLOR COATING PROPERTIES, BENEFITS

- Recommended by leading floor manufacturers
- Eco friendly product – Eco friendly implementation
- Suitable for smaller areas as well
- Increased lifetime – up to 10 years
- Cost efficient
- Dust free implementation
- Renovates and protects the floor's ESD properties
- High wear and tear resistance
- Decreases the cleaning and facility expenses
- Different gloss grades available (mat, satin and gloss)
- Quick – 24 hours implementation for 1,000 m²
- No after care (waxes and polishes) are needed
- High resistance to chemicals

Dr. Schutz products were tested and certified by these institutes:



ESD CLEANER

Cleaning concentrate especially developed for usage on ESD floors. Suitable for intensive cleaning as well as for (daily) routine cleaning. Recommended for all kinds of ESD flooring made of PVC, Linoleum or epoxy resin before and after protection with Dr. Schutz ESD Long Life PU Sealer. Excellent dirtbinding properties, even in case of fatty deposits. Preserves the conductive properties of ESD flooring. Does not have any negative impact to the surface even if used at low dilution.

Does not leave any residue or protective film on the floor and therefore does not cause greying (development of grey filming).

The usage of this product fastens the evaporation of water from the ESD surface.

Dilution ratio

1:200 Daily Cleaning with mop

1:400 Daily Cleaning with automatic cleaning appliance



We care about floors!

Alpár lakab

Product Manager ESD Coatings

www.esd-floorcoatings.com

E-Mail: aia@dr-schutz.com

Telefon: +40 743 147 517

Dr. Schutz GmbH

International Head office

Holbeinstrasse 17, D-53175 Bonn

Germany

Telefon: +49 228 95 352 36